



Located right behind Sal's stunning white sandy beaches and safe turquoise waters & just a few minutes stroll to the lively tourist Mecca of Santa Maria lies **Ocean Breeze** - a mixture of superb-quality 2 & 3 bed apartments, each fully furnished & finished to an exceptional standard.

The development is situated on the Djadsal Moradias Aquapark - a resort boasting a huge range of facilities, including a casino, theatres, disco, restaurants & a huge sports complex making **Ocean Breeze** ideal for the fast growing holiday market this island is enjoying.

In addition to the developers own extensive furniture pack, offered **NO EXTRA COST**, a **DELUXE FURNITURE PACK**, which includes a full-furniture upgrade, Air Conditioning, Plasma Screen TV, Satellite TV, Wireless Internet & BBQ!

Financing an apartment couldn't be easier, simply pay 25% on contract, a further 25% after 6 months & pay the remaining 50% on completion! And if that isn't enough, there is a leading overseas mortgage specialist Capital Finance Partners to offer you 70% mortgages!!!

Naturally with prices starting from just €110,000 these apartments are selling fast, so contact us now

Key Investment Points

Superb location - just behind Sal's best beaches

Great Payment Strategy - 25% on contract, 25% after 6 months & 50% on hand-over

Huge range of facilities on site offering excellent rental potential

Prices from just €110,000

Deluxe Furniture Pack

Air Conditioning

Plasma Screen TV

Satellite TV & Wireless Internet for each apartment

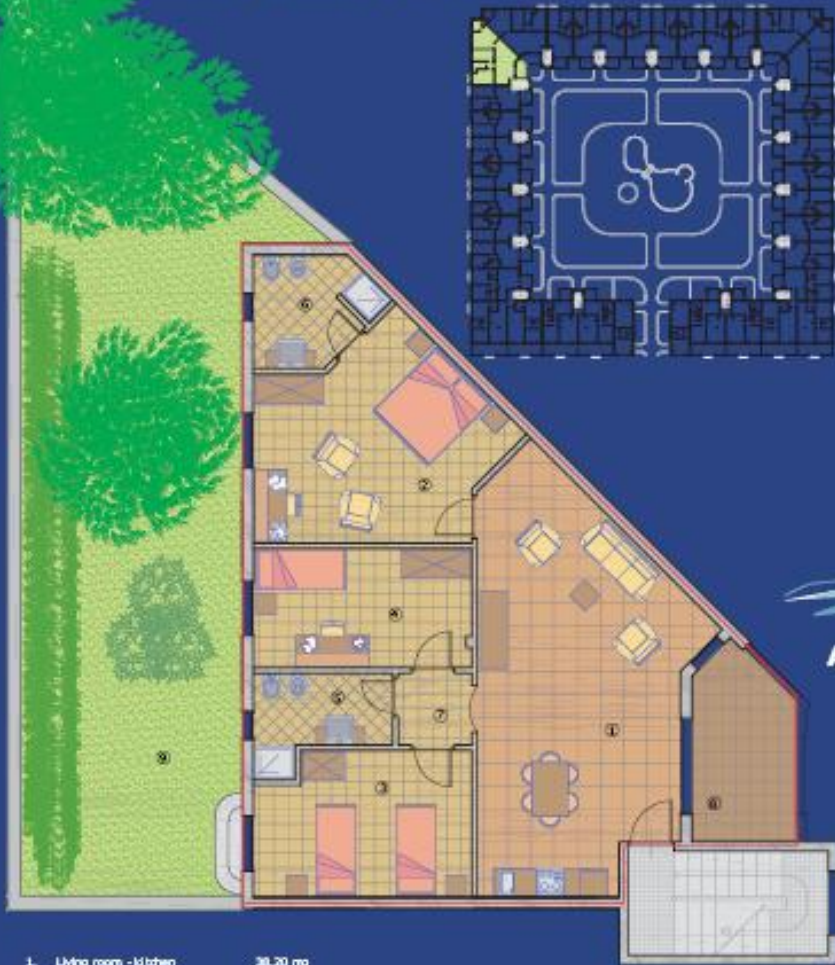
Short walk to Santa Maria

PAY
25% NOW
25% After 6months
50% on completion!

70% MORTGAGES
AVAILABLE!



THREE BEDROOM DELUXE



1. Living room - kitchen	38.20 m ²
2. Main bedroom	21.70 m ²
3. Second bedroom	14.70 m ²
4. Single bedroom	12.50 m ²
5. Bathroom	5.50 m ²
6. Fin suite	6.00 m ²
7. Hallway	2.55 m ²
8. Inside terrace	9.00 m ²
UTILIZED SURFACE	119.15 m²
9. Garden	90.00 m ²
GROSS SURFACE	122.69 m²

GROSS SURFACE:
 100% internal walls
 100% external walls
 50% walls in common

GROUND FLOOR
 scale 1:100

OCEAN BREEZE

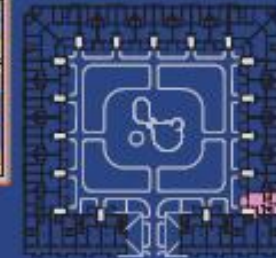
APARTMENT PLANS

TWO BEDROOM, TWO BATHROOM FRONT



1. Living room - kitchen	24.68 m ²
2. Main bedroom	12.28 m ²
3. Second bedroom	10.28 m ²
4. Bathroom	4.28 m ²
5. Fin suite	4.28 m ²
6. Hallway	4.00 m ²
7. Inside terrace	6.70 m ²
UTILIZED SURFACE	69.10 m²
GROSS SURFACE	73.99 m²

GROSS SURFACE:
 100% internal walls
 100% external walls
 50% walls in common



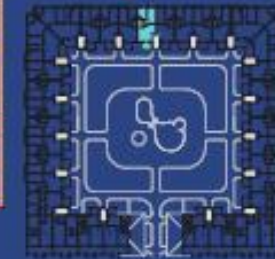
BLOCK "F"
 SECOND FLOOR
 scale 1:100

TWO BEDROOM STANDARD



1. Living room - kitchen	24.38 m ²
2. Main bedroom	11.98 m ²
3. Second bedroom	9.28 m ²
4. Bathroom	4.28 m ²
5. Hallway	2.28 m ²
6. Inside terrace	5.28 m ²
7. Outside terrace	1.48 m ²
UTILIZED SURFACE	69.49 m²
GROSS SURFACE	73.99 m²

GROSS SURFACE:
 100% internal walls
 100% external walls
 50% walls in common



BLOCK "F"
 SECOND FLOOR
 scale 1:100

Contact us now for the latest availability



- | | | |
|----|-----------------------|----------|
| 1. | Living room - kitchen | 26.60 mq |
| 2. | Main bedroom | 12.85 mq |
| 3. | Second bedroom | 10.65 mq |
| 4. | Bathroom | 4.20 mq |
| 5. | En suite | 4.10 mq |
| 6. | Hallway | 4.00 mq |
| 7. | Inside terrace | 6.70 mq |

UTILIZED TERRACE **69.10 mq**

GROSS SURFACE **77.50 mq**



GROSS SURFACE :

100% internal walls

100% external walls

50% walls in commun



1.	Living room - kitchen	24.00 mq
2.	Main bedroom	13.00 mq
3.	Second bedroom	9.20 mq
4.	Bathroom	4.10 mq
5.	Hallway	2.00 mq
6.	Inside terrace	6.70 mq
7.	Outside terrace	1.40 mq

UTILIZED SURFACE **60.40 mq**

GROSS SURFACE **67.00 mq**



GROSS SURFACE :

- 100% internal walls
- 100% external walls
- 50% walls in commun



1.	Living room - kitchen	38.20 mq
2.	Main bedroom	21.70 mq
3.	Second bedroom	14.70 mq
4.	Single bedroom	12.50 mq
5.	Bathroom	5.50 mq
6.	En suite	6.00 mq
7.	Hallway	2.55 mq
8.	Inside terrace	9.00 mq

UTILIZED SURFACE **110.15 mq**

9.	Garden	88.00 mq
----	--------	----------

GROSS SURFACE **122.60 mq**



GROSS SURFACE :

100% internal walls
100% external walls
50% walls in commun

OCEAN
BREEZE

